

Accurate Depth Imaging With Advanced Velocity Modeling

CHALLENGE

The complex Central North Sea overburden, featuring shallow channels, contourites and injectites, presents a challenge for velocity modeling and often leads to distortions and difficulties in accurate depth placement of deeper targets.

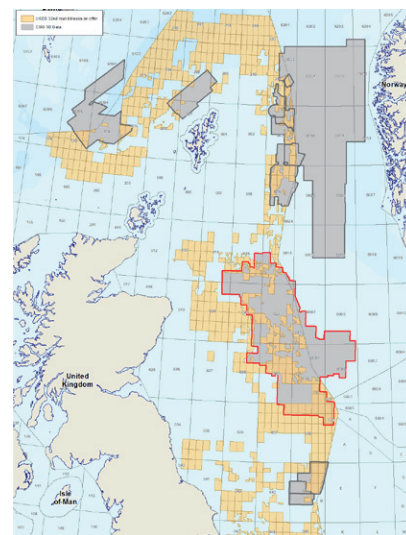
SOLUTION

Cornerstone Evolution reprocessing utilizes extensive dual-azimuth data coverage in the region to enhance the velocity model for over 9000 km² of the Central North Sea. Furthermore, by incorporating the latest velocity modeling techniques, including QFWI, TomoML, joint reflection-refraction tomography and by calibrating with over 200 wells, CGG has constructed the most comprehensive and accurate regional velocity model for the wider data set to date.

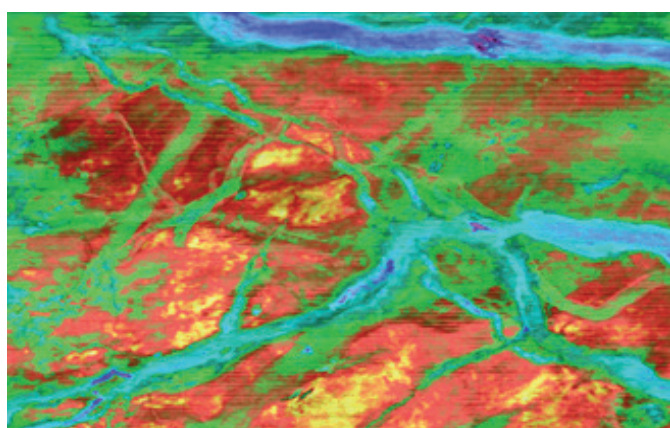
RESULTS

Cornerstone Evolution is helping to de-risk more complex structural and stratigraphic targets within the HP/HT area of the basin and is reducing depth uncertainty with improved calibration to key wells in the region.

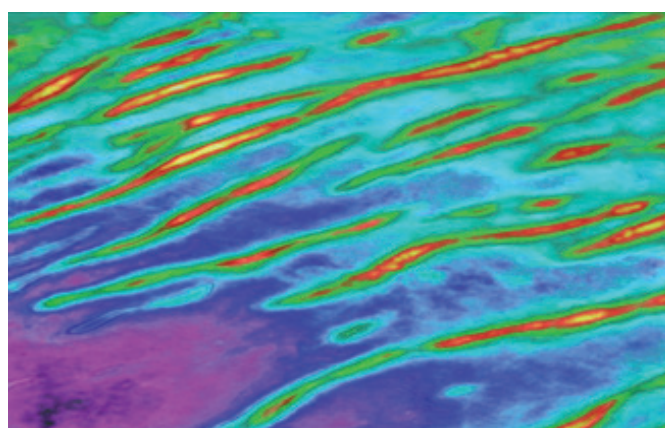
DE-RISK YOUR
32ND ROUND
AWARDS **NOW**



CGG 32nd round coverage.



Evolution velocity depth slice through quaternary channels.



Evolution velocity depth slice through contourites.

Follow the link below to find out more, or contact us to arrange a data viewing:

Regional Contact:

Cameron Grant

Tel.: +44 1293 68 3340

✉ Cameron.grant@cgg.com

Thomas Obidairo

Tel.: +44 1293 68 3206

✉ Thomas.obidairo@cgg.com

cgg.com/cornerstone

