

# CGG - A GLOBAL TECHNOLOGY AND HPC LEADER

JANUARY 2024

[cgg.com](https://www.cgg.com)



# A growing scope of businesses

## CORE BUSINESSES



### Geoscience

Established leader in subsurface imaging, geology and geoscience services.



### Earth Data

The industry's most technically advanced seismic data and geologic studies in the world's key locations.



### Sensing & Monitoring

Established leader in marine, land, ocean floor and downhole seismic equipment and gauges.

## BEYOND THE CORE



### Digital Sciences

Data transformation, data science, AI, machine learning, CGG Cloud services and HPC expertise.

### Energy Transition



Supporting industry transition with technology, data and expertise for CCUS, geothermal and critical minerals.

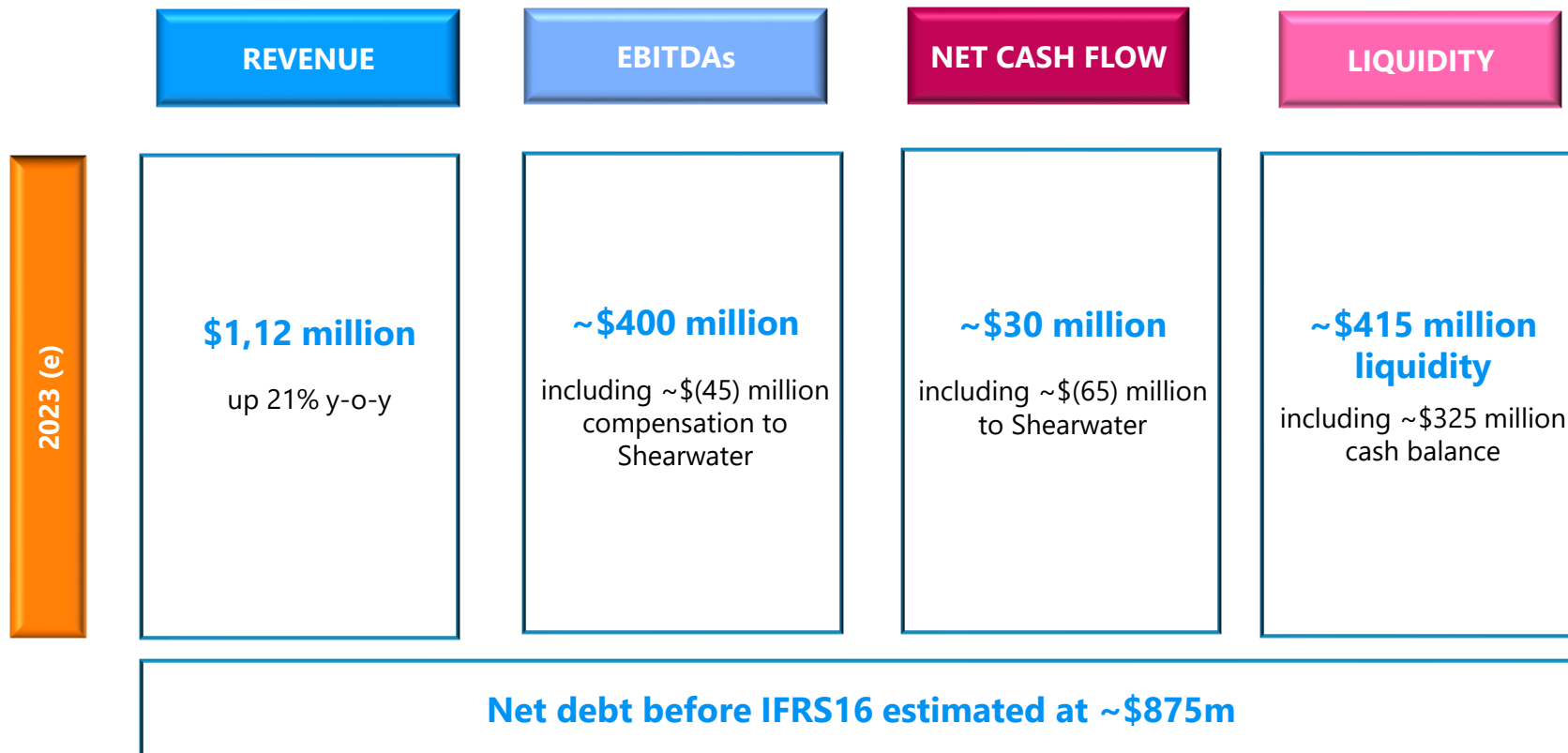


### Monitoring & Observation

Structural health and earthworks monitoring solutions with advanced sensors.

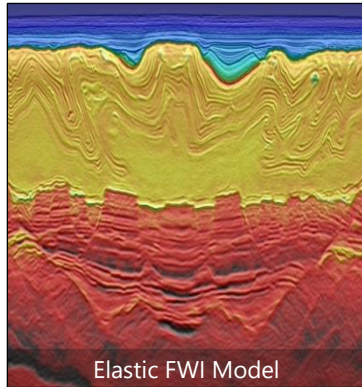
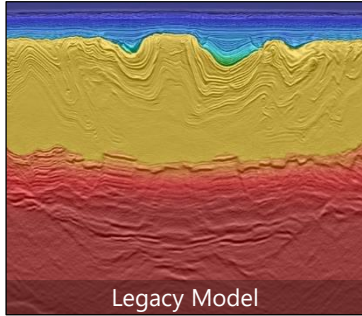


# 2023 key segment estimated figures

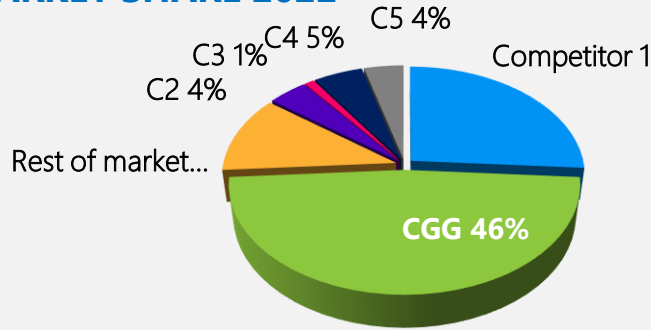




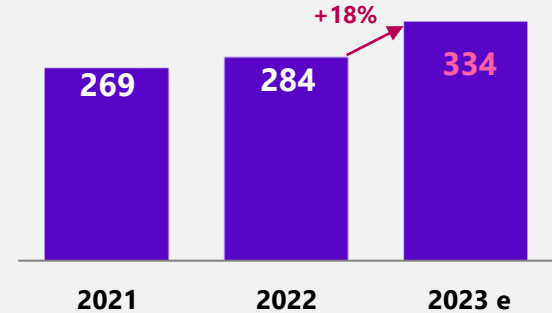
# Geoscience: solid activity worldwide and technology differentiation supports high single digit growth



## MARKET SHARE 2022



## GEO EXTERNAL REVENUE (\$m)



Highly differentiated in complex environments.

Leader in **nodes processing** thanks to unmatched advanced algorithms and HPC supports

Majority exposure to **reservoir development** and **production segments**, stable part of upstream value chain,

Long-standing relationships with **diversified client base** (NOCs, IOCs, Independents) provide steady revenues through open and dedicated centers

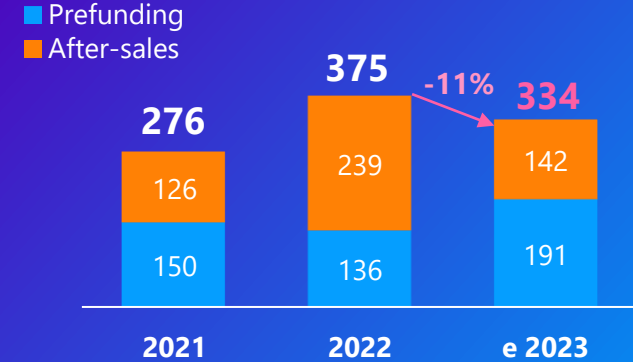
# Earth Data: High prefunding of new programs while after-sales remain weak



## 2023 main projects

- **Acquisition:** Norway, Suriname and Brazil
- **Reprocessing:** Gulf of Mexico, Brazil, North Sea and Uruguay
- Delayed Brazil and GoM licensing rounds negative impacts estimated to ~\$25million

## EDA REVENUE (\$m)



## KEY 2023 ESTIMATED FIGURES

~103%

Pre-funding  
Rate

~\$180m

Capex

1,8x 2022 cash on cash  
sales / capex

# Sensing & Monitoring: growth cycle driven by the lumpiness of mega-crew projects

## NON-SEISMIC ACTIVITIES



Structural Monitoring  
Integrated Solutions



Energy Transition  
Life cycle monitoring solutions  
for offshore structures including  
carbon sequestration



Defense  
Custom-engineered marine  
acoustics and cable solutions



A global leader in  
seismic equipment



A historical leader  
& pioneer in the  
industry since 1956



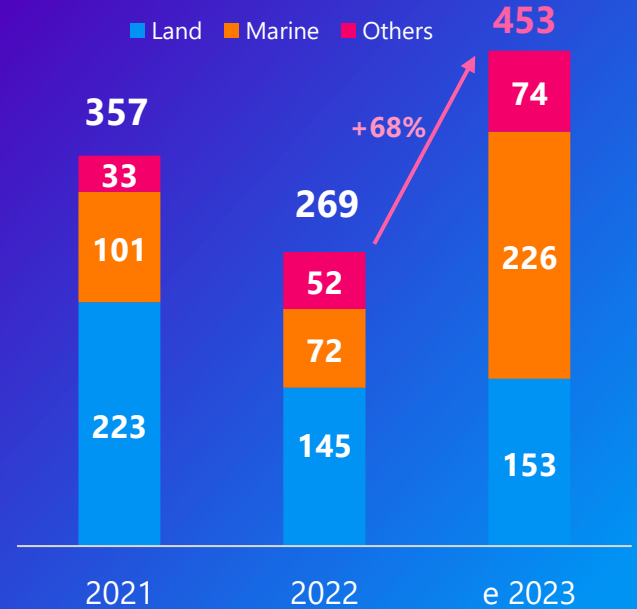
1 500  
employees  
worldwide



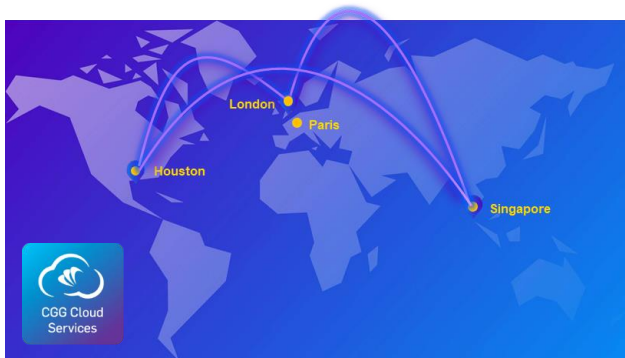
780  
Active  
patents

- **Large installed base**, a competitive advantage and a strong platform for leveraging market growth
- **Manufacturing flexibility** and high operating leverage to absorb market volatility
- **High financial impact of lumpy** offshore and onshore **mega equipment projects** (mega crews)

## SMO SALES (\$m)



# HPC & Cloud Solutions



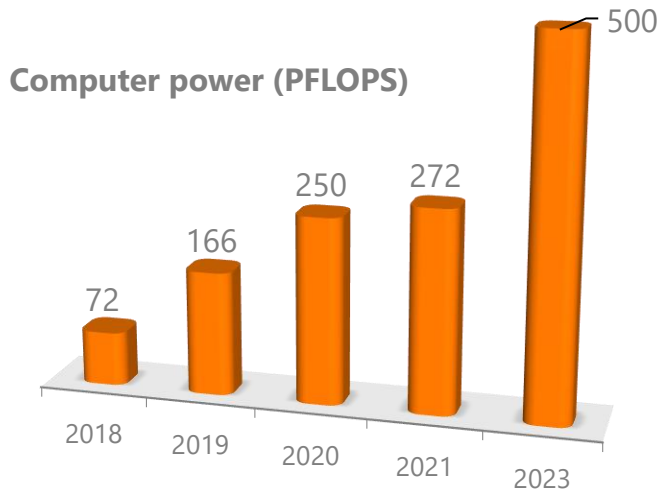
## HPC (High-Performance Computing)

- Providing access to highly-optimized HPC resources and digital platform
- Opening of the new UK HPC center
- First HPC contract with Biosimulytics, expanding into Health and Life Science market



## Cloud Services

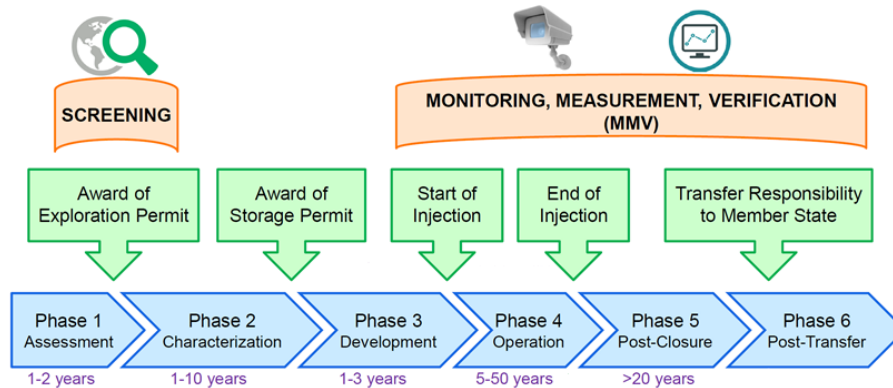
- A multi-site cloud offering flexibility and redundancy,
- Secure and efficient access to our exceptional HPC resources on secure CGG Cloud.



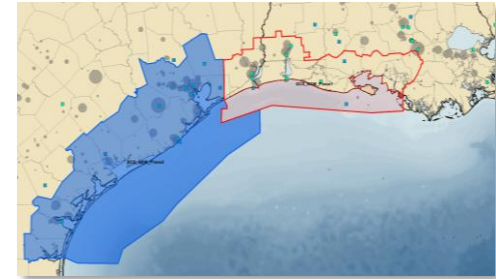
# Zoom on Low Carbon Energy

## Applying our expertise for the energy transition

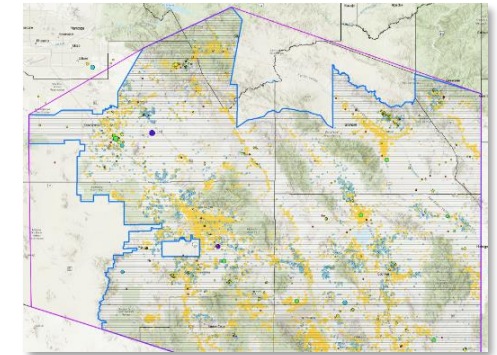
- **Carbon Storage**: applying a unique play-scale screening methodology to identify and de-risk carbon storage potential in the GoM, North-Sea and Australia



- **Minerals & Mining** : Increase awareness at every stage of the mining life cycle from exploration studies to production and closure monitoring programs



Carbon Storage screening study Gulf of Mexico



Arizona multi-physics airborne acquisition survey total 27,000 line kms



# Zoom on Structural Health Monitoring



## Market

- Infrastructure monitoring is based on measurement and analysis of the dynamic behavior of the structure,
- Allows to deduce by processing the dynamic characteristics of the structures.

## Geocomp

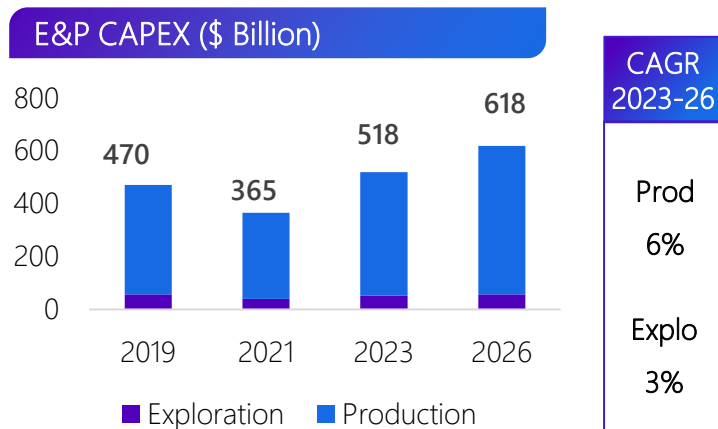
- Specialized in high value-added services and products for geotechnical risk management and infrastructure monitoring in the United States.

## Cable-stayed bridge test in Southern US

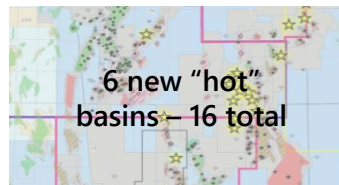
- Instrumented cable-stayed bridge with S-Lynks sensor solution for a major infrastructure operator,
- System measured vibration modes and cables tension and will allow more relevant and targeted maintenance.



# Our core market, Exploration and Production is moderately growing



- Focus on proven basins and ILX: low risk/cost/carbon, fast turnaround
- Offshore greenfield projects picking up
- Middle-East on a race to produce
- New emerging basins, select frontier exploration





# THANK YOU

# Balance Sheet



## At the end of September 2023

